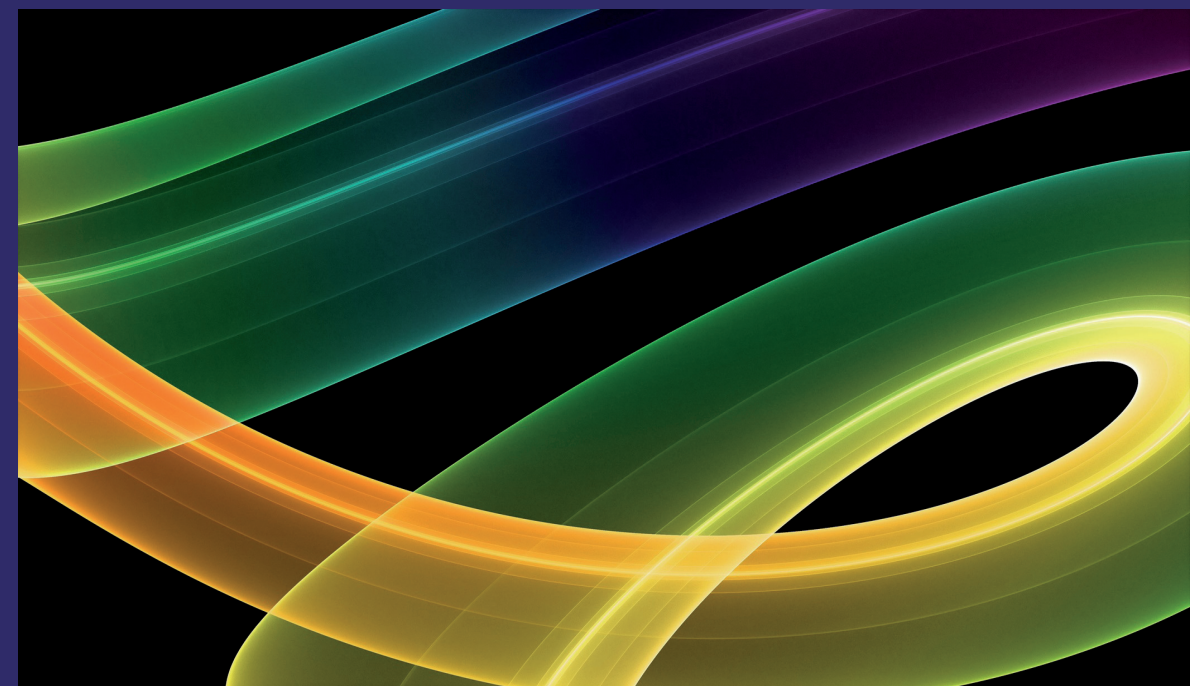


In the urban setting, high standards of living have encouraged automation to come right to the forefront and be an integral factor of any home design. Simultaneously, environmental concerns have ensured that energy efficient housing models and appliances are the preferred choice. We integrate these requirements into a smart and energy efficient model home which employs device control using a technique as intuitive as gestures. For decades now, remote controls have enabled us to dictate the working and functions of everyday appliances. However, consider a scenario where a person, Carol, is all tucked in her bed and realizes that she has forgotten to switch off the lights and fans of the living room or the heating system. In such a scenario, a centralized control unit located at a convenient location from where Carol could control all devices would be useful. This is where the need for centralized automation arises. Now imagine if Carol had to find the remote to control the centralized system, then the purpose of automation would be lost and hence, gestures being an intuitive means of expression are an effective way to control household appliances at reasonable efficiencies.



Aman Chadha  
Divyajyoti Rajdev  
Shruti Nirantar

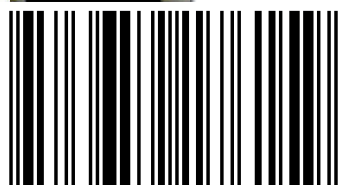


**Aman Chadha**

Aman Chadha is currently pursuing his graduate studies in Electrical and Computer Engineering from the University of Wisconsin-Madison, USA. Prior to this, he pursued his Bachelors in Electronics and Telecommunication Engineering from the University of Mumbai. His interests include Image Processing, Computer Vision and Processor Microarchitecture.

# Smart and Energy-Efficient Home Automation using Gesture Recognition

Controlling home appliances and devices with the  
flick of your hand



978-3-659-17615-9

 **LAMBERT**  
Academic Publishing

**Aman Chadha  
Divyajyoti Rajdev  
Shruti Nirantar**

**Smart and Energy-Efficient Home Automation using Gesture  
Recognition**



**Aman Chadha  
Divyajyoti Rajdev  
Shruti Nirantar**

# **Smart and Energy-Efficient Home Automation using Gesture Recognition**

**Controlling home appliances and devices with the  
flick of your hand**

**LAP LAMBERT Academic Publishing**

### **Impressum/Imprint (nur für Deutschland/only for Germany)**

Bibliografische Information der Deutschen Nationalbibliothek: Die Deutsche Nationalbibliothek verzeichnet diese Publikation in der Deutschen Nationalbibliografie; detaillierte bibliografische Daten sind im Internet über <http://dnb.d-nb.de> abrufbar.

Alle in diesem Buch genannten Marken und Produktnamen unterliegen warenzeichen-, marken- oder patentrechtlichem Schutz bzw. sind Warenzeichen oder eingetragene Warenzeichen der jeweiligen Inhaber. Die Wiedergabe von Marken, Produktnamen, Gebrauchsnamen, Handelsnamen, Warenbezeichnungen u.s.w. in diesem Werk berechtigt auch ohne besondere Kennzeichnung nicht zu der Annahme, dass solche Namen im Sinne der Warenzeichen- und Markenschutzgesetzgebung als frei zu betrachten wären und daher von jedermann benutzt werden dürften.

Coverbild: [www.ingimage.com](http://www.ingimage.com)

Verlag: LAP LAMBERT Academic Publishing GmbH & Co. KG  
Heinrich-Böcking-Str. 6-8, 66121 Saarbrücken, Deutschland  
Telefon +49 681 3720-310, Telefax +49 681 3720-3109  
Email: [info@lap-publishing.com](mailto:info@lap-publishing.com)

Approved by: Mumbai, University of Mumbai, Diss., 2012

Herstellung in Deutschland (siehe letzte Seite)

**ISBN: 978-3-659-17615-9**

### **Imprint (only for USA, GB)**

Bibliographic information published by the Deutsche Nationalbibliothek: The Deutsche Nationalbibliothek lists this publication in the Deutsche Nationalbibliografie; detailed bibliographic data are available in the Internet at <http://dnb.d-nb.de>.

Any brand names and product names mentioned in this book are subject to trademark, brand or patent protection and are trademarks or registered trademarks of their respective holders. The use of brand names, product names, common names, trade names, product descriptions etc. even without a particular marking in this works is in no way to be construed to mean that such names may be regarded as unrestricted in respect of trademark and brand protection legislation and could thus be used by anyone.

Cover image: [www.ingimage.com](http://www.ingimage.com)

Publisher: LAP LAMBERT Academic Publishing GmbH & Co. KG  
Heinrich-Böcking-Str. 6-8, 66121 Saarbrücken, Germany  
Phone +49 681 3720-310, Fax +49 681 3720-3109  
Email: [info@lap-publishing.com](mailto:info@lap-publishing.com)

Printed in the U.S.A.

Printed in the U.K. by (see last page)

**ISBN: 978-3-659-17615-9**

Copyright © 2012 by the author and LAP LAMBERT Academic Publishing GmbH & Co. KG and licensors

All rights reserved. Saarbrücken 2012

*Dedicated to my parents\**

\*without whom all my aims, aspirations and dreams wouldn't exist

## **ACKNOWLEDGEMENTS**

We, namely, Aman Chadha, Divyajyoti Rajdev and Shruti Nirantar, owe thanks to a great many people who helped and supported us during the conceptualization and implementation of the proposed work as well as during its documentation.

Our deepest thanks to Professor K.Y. Rajput, our guide and mentor, for leading us at every step and reviewing various documents of ours with utmost attention and care.

We express our thanks to the principal and staff of Thadomal Shahani Engineering College, especially our head of department, Dr. Uday Pandit Khot for providing us with the required infrastructure and facilities to accomplish the design and development of the proposed system.

Lastly, we would like to thank the non-teaching staff of the Electronic Devices and Circuit Lab and well as the B.E. Project Lab for their help and patience.

Without the support of the above mentioned, this work would have been a distant reality.

## **CONTENTS**

<b>1. INTRODUCTION</b>	1
<b>1.1 OBJECTIVE</b>	1
1.2 PROBLEM STATEMENT AND FORMULATION	2
1.3 ORGANIZATION OF WORK	5
<b>2. REVIEW OF LITERATURE</b>	7
2.1 WHAT ARE FEATURES?	7
2.2 FEATURE DETECTION & EXTRACTION	7
2.2.1 TYPES OF FEATURE DETECTION ALGORITHMS	8
2.2.2 SCALE INVARIANT FEATURE TRANSFORM	9
2.2.3 ADVANTAGES OF SIFT ALGORITHM	11
2.2.4 APPLICATIONS OF SIFT ALGORITHM	12
2.3 TOUCHSCREEN BASED APPROACH GESTURE RECOGNITION	12
<b>3. IDEA OF THE PROPOSED SOLUTION</b>	16
3.1 SMART, ENERGY EFFICIENT AND AUTOMATION CONSIDERATIONS	16
3.2 COMMONLY USED TECHNIQUES FOR GESTURE RECOGNITION	18



<b>4. MATHEMATICAL MODELLING ANALYSIS AND DESIGN</b>	<b>22</b>
4.1 SYSTEM OVERVIEW	22
4.2 SOFTWARE SIDE IMPLEMENTATION	23
4.3 HARDWARE SIDE IMPLEMENTATION	23
4.4 REQUIREMENT ANALYSIS	24
4.4.1 HARDWARE REQUIREMENTS	24
4.4.2 SOFTWARE REQUIREMENTS	24
4.4.3 FUNCTIONAL REQUIREMENTS	24
4.4.4 NON – FUNCTIONAL REQUIREMENTS	25
4.5 WHY MATLAB?	25
4.6 ASPECTS OF IMAGE PROCESSING	26
4.7 IMAGE PROCESSING USING MATLAB	27
4.8 WHY ATMEGA?	31
<b>5. IMPLEMENTATION</b>	<b>35</b>
5.1 CONCEPTUALIZATION	35
5.2 SEQUENCE FLOW FOR 2D GESTURE RECOGNITION	39
5.3 SEQUENCE FLOW FOR 3D GESTURE RECOGNITION	40

5.4 SEQUENCE FLOW FOR HARDWARE IMPLEMENTATION	42
<b>6. TESTING AND RESULTS</b>	<b>48</b>
6.1 2D GESTURE RECOGNITION TEST	48
6.2 ACCURACY CALCULATION FOR 2D GESTURE RECOGNITION	50
6.3 3D GESTURE RECOGNITION TEST	50
<b>7. CONCLUSION AND FUTURE SCOPE</b>	<b>53</b>